

Family Medicine
SET - II

Duration: 20 minutes

Marks: 20

2 marks each

1. Write impact (any four points) of violence against women on her family.
2. Write four common causes of secondary headache.
3. What are the advantages (any four) of electronic medical records?
4. Write any four roles of family physician as a leader.
5. What are the elements (any four) of community oriented primary health care?
6. When you will inform police (any four instances) as a part of your duty as a doctor?
7. What is 'ICE' in family practice? What is the importance of exploring ICE.
8. Enumerate four red flag signs of headache.
9. Write at least four steps of prevention you can take for a patient who is threatening suicide.
10. What is adult chain of survival in BLS as per American Heart Association (AHA) guidelines?

ALL INDIA INSTITUTE OF MEDICAL SCIENCES
BHUBANESWAR
Pre-professional Exam- 2012 Batch

Community & Family Medicine-Paper II

Time: 10:00-13:00

Date: 15.10.2016

Max marks: 75

Attempt all the questions

Answer each section in a different sheet.

Answer all questions of a section together.

Section A

1. Describe the epidemiological factors involved in the occurrence of malaria, its surveillance and treatment of malaria. [5+4+6]
2. How are the states and districts categorized according to HIV prevalence? What are the components of National AIDS Control Programme IV? What are the first line ART regimens followed under NACP? [4+6+5]

Section B

3. What is the maternal mortality ratio? What are the factors that affect MMR? What are the measures that are being implemented to control MMR in India? [2+4+4]
4. Write short notes on: [5x7]
 - a. Essential newborn care.
 - b. Risk factors for cardiovascular diseases.
 - c. Cancer registration.
 - d. Growth monitoring.
 - e. Objectives of National Mental Health Policy of India.
 - f. Vision 2020.
 - g. Packages of services to be provided at CHC/FRU level.

COMMUNITY & FAMILY MEDICINE

PAPER I

Instructions:

1. Answer each section in separate answer books
2. Attempt all questions and sub-questions in serial order
3. Draw diagrams wherever necessary
4. Figures to the extreme right indicate marks

Total marks: 50

Time: 2½ hours

SECTION A

1. A local newspaper has reported an outbreak of Chikungunya in your PHC area. As a Medical Officer in-charge, enlist the steps for this outbreak investigation. Enumerate control measures. [4+4 = 08]
2. Define Culture. Illustrate the role of culture in health and disease giving appropriate examples. [2+3 = 05]
3. Differentiate between (ANY THREE): [4X3 = 12]
 - a. Sampling and non-sampling errors
 - b. Lead time and Screening time
 - c. Eugenics and Euthenics
 - d. Screening and Diagnostic test

SECTION B

4. Enlist measures of burden of coronary heart disease for a population. Discuss strategies to prevent coronary heart diseases. [3+5 = 08]
5. Define Bio-Medical Waste. Describe the process of safe bio-medical waste disposal from an immunization clinic in a PHC. [1+4=05]
6. Write short notes (ANY THREE): [4X3 = 12]
 - a. Time distribution of disease
 - b. Disaster mitigation in health sector
 - c. Components of Health Information System
 - d. National Immunization Schedule

@@@@@

Instructions

Answer all the questions. Draw diagram wherever necessary. Use separate answer sheets for Section A and B.

Section - A

1. Describe the basic framework of a case-control study. What are the steps in conducting a case-control study? Describe in brief the biases encountered in case-control studies. (3+6+4=13)

2. **Write short notes on:**

(5 x 5 = 25)

- a) Sources of health information in India
- b) Normal distribution
- c) Demographic cycle
- d) Physical Quality of Life Index
- e) Activities of Daily Living

PTO

Page No. _____

DEPARTMENT OF COMMUNITY AND FAMILY MEDICINE
ALL INDIA INSTITUTE OF MEDICAL SCIENCES, RAIPUR
2012 Batch - Pre University Theory Exam - October 2016

Paper II

Duration: 2 Hrs 40 Minutes

Marks: 50

Instructions:

1. All questions are compulsory.
2. The number to the right indicates full marks for respective question.
3. Draw the diagram wherever necessary.

SECTION A

- Q. 1 Mention the objectives of Revised National Tuberculosis Control Program (RNTCP). Write its organisational structure. Describe five components of DOTS. **(1+2+5)**
- Q. 2 Enumerate the factors affecting Infant Mortality. Elaborate the preventive and social measures that can reduce IMR. **(2+3)**
- Q. 3 Write short notes (any three out of four) **(4 Marks x 3=12)**
- a) Sex ratio
 - b) Lifestyle and healthy aging
 - c) Symptoms of drug addiction
 - d) Integrated Counselling & Testing Centres (ICTC)

SECTION B

- Q. 4. Define Occupational Diseases and write its classification. Describe medical measures to prevent & control occupational diseases. **(1+2+5)**
- Q. 5. Name the fat soluble vitamins. Mention dietary sources and functions of vitamin A. Write clinical manifestations of its deficiency. **(1+1+1+2)**
- Q. 6 Write short notes (any three out of four) **(4 Marks x 3=12)**
- a) Assured services of CHC
 - b) Team concept in Family Medicine
 - c) Network analysis
 - d) Services of UNICEF



Department of Community Medicine and Family Medicine
7th End Sem Exam

Time: 2 hours

Marks : 50

Write short notes on following questions. Answer all. (5 marks each)

1. Pre and Post-exposure prophylaxis against Rabies
2. Components of Adolescent health under RMNCH+A
3. Epidemiology and control of Cancer Cervix
4. Health issues of elderly
5. Newer vaccines in National immunization schedule
6. IPHS standards for CHC
7. Functions of ICTC
8. AEFI
9. Syndromic approach to STD
10. VISION 2020 – Right to Sight

50%

① - Emergency
② - rabies
③ - RMNCH+A
④ - AEFI
⑤ - Right to Sight
⑥ - New vaccines

Section: B

Answer 1/2/3

1. Explain the natural history of disease and level of prevention? (10 Marks= 5+5)

2. There are 50 cases of Chronic Kidney Disease (CKD) in two villages of Angul districts of Odisha. These cases are suspected to be exposed to a pesticide. Which epidemiological study will be suitable for finding the association of pesticide and CKD? Elaborate the steps of the study. What are the advantages & disadvantages of this kind of study? (10 Marks= 2+4+4)

Cohort study

3. Write short note on Normal Distribution curve (5 marks)

Public
Health
11, 11



All India Institute of Medical Sciences, Bhubaneswar
3rd Professional MBBS Final Examination 2017

Time: 3 Hours

Community Medicine (Paper - I)

Max. Marks: 75

Instructions

Answer all the questions. Draw diagram wherever necessary. Use separate answer sheets for Section A and B.

Section - A

Q1. Illustrate various types observational studies? Explain the advantages of analytical cross-sectional design. (10 + 3 = 13)

Q2. Write short notes on: (5 x 5 = 25)

- a. Role of social determinants of health in disease control.
- b. Discuss different approaches to health education
- c. Public Health Emergency of International Concern
- d. Levels of Prevention
- e. Demographic cycle

Section - B

Q3. Discuss different tiers ^{levels} of health care delivery system in India and functionaries involved at each level. Describe the role of ASHA in providing maternal and child health care services in the village. (6 + 6 = 12)

Q4. Write short notes on: (5 x 5 = 25)

- a. Nutritional status indicators in a child
- b. Common air pollutants used in calculating air quality index and its source.
- c. Occupational hazards of a Health Worker
- d. Role of Vitamin D in health and disease
- e. Planning Cycle

DEPARTMENT OF COMMUNITY AND FAMILY MEDICINE
ALL INDIA INSTITUTE OF MEDICAL SCIENCES, RAIPUR
2013 Batch - Pre University Theory Exam - October 2017

Paper - I

Duration: 2 Hrs 40 Minutes

Marks: 50

Instructions:

1. All questions are compulsory.
2. The number to the right indicates full marks for respective question.
3. Draw the diagram wherever necessary.

SECTION A

- Q. 1 What is the Health Sickness Spectrum? What are the Determinants of Health? **(4+4)**
- Q. 2 Epidemiological features of Japanese Encephalitis (JE) and JE Vaccine. **(3+2)**
- Q. 3 Write short notes (any three out of four) **(4 Marks x 3=12)**
- a) Zika Virus Disease
 - b) Doctor-patient relationship
 - c) Genetic Counselling
 - d) High Risk Strategy in Primary Prevention

SECTION B

- Q. 4 Unusually large number of jaundice cases was reported from one sub centre of your area. As a Medical Officer in charge PHC of that area, how will you plan for its investigation? **(8)**
- Q. 5 Describe the epidemiology of Rheumatic Heart Disease (RHD). Write the measures taken for secondary prevention of RHD. **(2+3)**
- Q. 6 Write short notes (any three out of four) **(4 Marks x 3=12)**
- a) Air pollution
 - b) Secondary prevention of cancer
 - c) First-aid for adverse effects of heat
 - d) Tracking of blood pressure

DEPARTMENT OF COMMUNITY AND FAMILY MEDICINE
ALL INDIA INSTITUTE OF MEDICAL SCIENCES, RAIPUR
 2013 Batch - Pre University Theory Exam - October 2017

Paper - II

Duration: 2 Hrs 40 Minutes

Marks: 50

Instructions:

1. All questions are compulsory.
2. The number to the right indicates full marks for respective question.
3. Draw the diagram wherever necessary.

SECTION A

- Q. 1 Define Primary Health Care. Enumerate elements of Primary Health Care. Describe categorization of Sub-centres. **(2+2+4)**
- Q. 2 a) Advantages of Breast feeding **(2.5)**
 b) Baby Friendly Hospital Initiative (BFHI) **(2.5)**
- Q. 3 Write short notes (any three out of four) **(4 Marks x 3=12)**
- a) Nutritional Rehabilitation Centers (NRCs)
 - b) Warning signals of poor mental health
 - c) Health problems of the aged
 - d) Household toilet component of Swachh Bharat Mission-Urban

SECTION B

- Q. 4 Write dynamic definition of Health Education. Enumerate contents and describe principles of Health Education. **(2+2+4)**
- Q. 5 Describe the clinical manifestations of Iodine Deficiency Disorder. Mention the measures taken to prevent it. **(2+3)**
- Q. 6 Write short notes (any three out of four) **(4 Marks x 3=12)**
- a) Demographic cycle
 - b) Psychosocial hazards at work place
 - c) Proposed SDG indicators linked to RMNCH
 - d) Panchayati Raj



All India Institute of Medical Sciences, Bhubaneswar
3rd Professional MBBS Final Examination 2017

Time: 3 Hours

Community Medicine (Paper - I)

Max. Marks: 75

Instructions

Answer all the questions. Draw diagram wherever necessary. Use separate answer sheets for Section A and B.

Section - A

Q1. Illustrate various types observational studies? Explain the advantages of analytical cross-sectional design. (10 + 3 = 13)

Q2. Write short notes on: (5 x 5 = 25)

- a. Role of social determinants of health in disease control.
- b. Discuss different approaches to health education
- c. Public Health Emergency of International Concern
- d. Levels of Prevention
- e. Demographic cycle

Section - B

Q3. Discuss different tiers ^{levels} of health care delivery system in India and functionaries involved at each level. Describe the role of ASHA in providing maternal and child health care services in the village. (6 + 6 = 12)

Q4. Write short notes on: (5 x 5 = 25)

- a. Nutritional status indicators in a child
- b. Common air pollutants used in calculating air quality index and its source.
- c. Occupational hazards of a Health Worker
- d. Role of Vitamin D in health and disease
- e. Planning Cycle

SECTION - B & C

Duration: 2 Hrs 45 Minutes

Marks: 60

Instructions:

1. All questions are compulsory.
2. Answer each section in the respective answer book only.
3. Answer written in an inappropriate answer book will not be assessed in any case.
4. The numbers to the right indicate full marks for respective question.
5. Draw the diagram wherever necessary.

SECTION B

- Q. 2 Write short answers (any five out of six) **(4x5=20)**
- a) Maternal Mortality ratio
 - b) Demographic cycle
 - c) India Newborn Action Plan (INAP)
 - d) Mass Drug Administration for Filariasis
 - e) Role of Triage in disaster management
 - f) Juvenile Delinquency

- Q. 3 Write short answers (any five out of six) **(4x5=20)**
- a) TB-HIV Co-ordination activities
 - b) Violence against women
 - c) Urban health care facilities
 - d) Referrals in Family Practice
 - e) Integrated Disease Surveillance Project (IDSP)
 - f) Doctor-patient relationship

SECTION C

- Q. 4 What is meant by Road to Health Chart? Write its different uses. A 3 year old boy weighed by AWW is having 6 Kg body weight. Mention the interventions in brief to be undertaken to address the issue. **(2+3+5)**
- Q. 5 Describe different Components of National Programme for Prevention and Control of Cancer, Diabetes, Cardiovascular disease and Stroke (NPCDCS) with reference to their objectives and activities. **(5+5)**

DEPARTMENT OF COMMUNITY MEDICINE & FAMILY MEDICINE
ALL INDIA INSTITUTE OF MEDICAL SCIENCES
BHUBANESWAR

End Semester Exam- 2015 Batch

Time: 15:00-17:00

Date: 17.07.2017

Max marks: 50

Write short notes on:

[10x5=50]

1. Determinants of health
2. Human Development Index
3. Types of bias
4. Accuracy of a diagnostic test
5. Principles of chlorination
6. Methods of solid waste disposal
7. Nutritional surveillance
8. Supplementary action of proteins
9. Measures of dispersion
10. Ideal IUD candidate

DEPARTMENT OF COMMUNITY MEDICINE & FAMILY MEDICINE
ALL INDIA INSTITUTE OF MEDICAL SCIENCES
BHUBANESWAR

End Semester Exam- 2014 Batch (6th)

Time: 10:00-12:00 Hrs (Including rest) *Date: 30.05.2017*

Max marks: 40

Write short notes on:

[10x4=40]

- 11. Integrated Vector Management
- 12. Diagnosis & treatment of malaria in an area where microscopy is available within 24 hours
- 13. Revised classification and treatment of pneumonia in 2-59 months old children
- 14. Management by objectives
- 15. Health care delivery system in India
- 16. Treatment categories under DOTS chemotherapy for tuberculosis
- 17. Type I & Type II Lepra Reactions
- 18. Syndromic management of vaginal discharge
- 19. National Deworming Day
- 20. Services available at the level of Subcentre, PHC, CHC and district under the National Programme for prevention and control of cancer, diabetes, CVD and stroke.



All India Institute of Medical Sciences, Bhubaneswar

3rd Professional MBBS Final Examination 2019

Time: 3 Hours Community Medicine (Paper - II) Max. Marks: 75

Instructions

Answer all the questions. Draw diagram wherever necessary. Use separate answer sheets for Section A and B.

SECTION - A

- 1) Describe the epidemiology of cancer in India. What are the causes of cancer? Elaborate on the cancer control measures in India. (4+4+5=13)

- 2) Write short notes on: (5 x 5 = 25)
 - a) Integrated Counselling and Testing Centres
 - b) Mass drug administration for filaria control
 - c) Lepra reaction
 - d) Assessment of functional status in elderly
 - e) Preventive measures of Hepatitis B for doctors

SECTION - B

- 3) Enumerate the different programmes introduced by the government to improve maternal and child health in India. What are the initiatives or interventions implemented through National Health Mission for the same. (4+8=12)
u.p. 2m

- 4) Write short notes on: (5 x 5 = 25)
 - a) Comprehensive eye-health care *Red key sign*
 - b) Home based newborn care *4m*
 - c) MDR tuberculosis
 - d) Management of pneumonia in a one-year old child
 - e) Objectives and strategies under the National Mental Health Programme
*• Apply to
• Socio-
• Develop
• Current
He*

DEPARTMENT OF COMMUNITY MEDICINE & FAMILY MEDICINE
ALL INDIA INSTITUTE OF MEDICAL SCIENCES
BHUBANESWAR

End Semester Exam- 2015 Batch

Time: 15:00-17:00

Date: 17.07.2017

Ma

[10

Write short notes on:

1. Determinants of health
2. Human Development Index
3. Types of bias
4. Accuracy of a diagnostic test
5. Principles of chlorination
6. Methods of solid waste disposal
7. Nutritional surveillance
8. Supplementary action of proteins
9. Measures of dispersion
10. Ideal IUD candidate



**All India Institute of Medical Sciences, Bhubaneswar
Pre-professional Examination 2019, Dt 18/10/2019**

Time: 3 Hrs

Community Medicine (Paper-II)

Max. Marks: 75

Instructions

Answer all the questions. Draw diagram wherever necessary. Use separate answer sheets for Section-A & B.

Section - A

Q1. Describe the epidemiology of common cancers in India. Discuss the activities under national programme for prevention and control of cancer, diabetes, cardiovascular diseases and stroke at different levels of care. (4+9 = 13)

Q2. Write short notes on – (5 x 5=25)

- a. Recent changes in ^{also} diagnostic and management guidelines of Tuberculosis under RNTCP
- b. Syndromic management in STI/ RTI
- c. Acute flaccid paralysis surveillance in polio
- d. Methods for prevention of Japanese encephalitis
- e. Epidemiology and prevention of yellow fever

*HNW
Delamont
B*

PTO

Department of community Medicine & Family Medicine
Theory End Semester (4th) Examination

Date: 13th July 2019

Total Mark: 50
Total Time: 2 Hours

Answer all questions

Answer section-A & section-B in separate answer sheets.

Section: A

1. Enlist contributors of air pollution in India. Describe how Air Quality Index is calculated and its interpretation. Enumerate and discuss strategies for prevention and control of air pollution in India (10 Marks = 2+3+5)
2. A developing country envisages to implement a universal screening program for prostate cancer. Enumerate and discuss the factors which should be considered before implementing such program. (5 marks)
3. Write short note on (5 marks each)
 - a. Triage in disaster situation
 - b. Food fortification

green, yellow, red, black

repeatability
validity

Factor

ALL INDIA INSTITUTE OF MEDICAL SCIENCES
BHUBANESWAR
Pre-professional Exam- 2013 Batch

Community & Family Medicine-Paper I

Time: 14.00-17.00

Date: 06.10.2017

Max marks: 75

Attempt all the questions

Answer each section in a different sheet.

Answer all questions of a section together.

Section A

1. What is a 'cohort'? What are the types of cohort studies? Write down the steps in conducting a cohort study. [1+3+9=13]

2. Write short notes on

- a. Sampling techniques
- b. Health problems of the elderly
- c. Dependency ratio
- d. UNICEF
- e. Barriers of communication

Section B

3. Define anaemia. What are its causes? What are its clinical symptoms? What are the strategies to control iron deficiency anaemia under the national programme? [1+2+2+7=12]

4. Write short notes on:

- a. Silicosis
- b. Health effects of overcrowding
- c. Principles of primary health care
- d. Network analysis
- e. Nutritional rehabilitation centre

Sender message channel

Receiver

ALL INDIA INSTITUTE OF MEDICAL SCIENCES, RAIPUR
MBBS 3rd Professional Examination – December 2016

COMMUNITY & FAMILY MEDICINE
PAPER II

Instructions:

1. Answer each section in separate answer books
2. Attempt all questions and sub-questions in serial order
3. Draw diagrams wherever necessary
4. Figures to the extreme right indicate marks

Total marks: 50
Time: 2½ hours

SECTION A

1. Describe the principles of Primary Health Care (PHC). Write its organizational structure. Enumerate elements of PHC. [4+2+2 = 08]
2. Enumerate the factors affecting Maternal Mortality. Elaborate the preventive and social measures that can reduce MMR. [2+3 = 05]
3. Write short notes (ATTEMPT ANY THREE): [4X3 = 12]
 - a. Demographic Cycle
 - b. Planning Cycle
 - c. UNICEF
 - d. Medical benefit under ESI Act.

SECTION B

4. Describe principles of health education. Enumerate contents of health education. [6+2 = 08]
5. Name the food toxins. Describe source, manifestation of any one food toxin and prevention of the same. [1+1+2+1=05]
6. Write short notes (ATTEMPT ANY THREE): [4X3 = 12]
 - a. District Mental Health Programme
 - b. Job functions of Accredited Social Health Activist (ASHA)
 - c. Fertility indicators
 - d. Directly Observed Treatment (DOT) in RNTCP

@@@@@

Section – B

Q3. Define infant mortality. Describe the factors affecting infant mortality in India and strategies to decrease IMR. (2 + 5 + 5 =12)

Q4. Write short notes on –

(5 x 5 =25)

- a. Janani Suraksha Yojana
- b. Adolescent health clinic
- c. Vision 2020
- d. Common mental health conditions in primary care setting and its diagnosis
- e. Segregation & disinfection of infectious materials according to Biomedical waste management Act, 2016



All India Institute of Medical Sciences, Bhubaneswar
3rd Professional MBBS Final Examination 2019

Time: 3 Hours Community Medicine (Paper - I) Max. Marks: 75

Instructions

Answer all the questions. Draw diagram wherever necessary. Use separate answer sheets for Section A and B.

SECTION - A

- 1) Define Epidemiology and its uses in disease control. How will you investigate an outbreak of Measles epidemic in the community? *Common to*
Measles
Syndrome
Measles
Common
NR (3+4+6 = 13)
- 2) Write short notes on: (5 x 5 = 25)
- a) Theory of disease causation ✓
 - b) Sullivan's Index ✓
 - c) Sanitation Barrier ✓
 - d) Total Fertility Rate and its significance in population control ✓
 - e) Public health emergencies of international concern. ✓

SECTION - B

- 3) Define Severe Acute Malnutrition (SAM). How will you manage a male child of four years with SAM in a rural community? (4+8 = 12)
- 4) Write short notes on: (5 x 5 = 25)
- a) Recent changes in Biomedical waste management.
 - b) Silicosis - *Silica*
 - c) Greenhouse effect and its health impact .
 - d) VED Analysis at Community Health Centre
 - e) Focus Group Discussion

Very
checked
20/10/19

DEPARTMENT OF COMMUNITY MEDICINE & FAMILY MEDICINE
ALL INDIA INSTITUTE OF MEDICAL SCIENCES
BHUBANESWAR

6th End-Semester Exam- 2013 Batch

Time: 2:30-4:30PM

Date: 14.06.2016

Max marks: 50

Write short notes on:

[10x5=50]

1. Benefits under Employees State Insurance Act
2. Mission Indradhanush
3. Contraindications for oral contraceptives
4. Management of a child with cough and fast breathing under IMNCI
5. Prevention of rheumatic heart disease
6. Activities for cancer control at district level under NPCDCS
7. Risk factors for type 2 diabetes mellitus
8. Post-exposure prophylaxis regimens against HIV infection
9. Mass drug administration under Elimination of Lymphatic Filariasis programme
10. Investigation of a food poisoning outbreak

By...

DEPARTMENT OF COMMUNITY AND FAMILY MEDICINE
ALL INDIA INSTITUTE OF MEDICAL SCIENCES, RAIPUR
2012 Batch - Pre University Theory Exam - October 2016

Paper I

Duration: 2 Hrs 40 Minutes

Marks: 50

Instructions:

1. All questions are compulsory.
2. The number to the right indicates full marks for respective question.
3. Draw the diagram wherever necessary.

SECTION A

- Q. 1 An outbreak of Dengue has occurred in a PHC of which you are posted as Medical Officer In-Charge. Enlist the steps for this outbreak investigation. Enumerate measures to control it. **(4+4)**
- Q. 2 What is acculturation? Write briefly on "Social stratification and Health." **(2 +3)**
- Q. 3 Write short notes (any three out of four) **(4 Marks x 3=12)**
- a) Congenital Rubella Syndrome
 - b) Inactivated Polio Vaccine
 - c) Eugenics
 - d) Monitoring and Surveillance

SECTION B

- Q. 4 Describe the epidemiology and prevention of Road Traffic Accident, with special reference to Indian scenario. **(6+2)**
- Q. 5 Write different categories of bio-medical waste as per Bio-Medical Waste Management Rules, 2016? Describe various methods used for final disposal of biomedical wastes. **(2+3)**
- Q. 6 Write short notes (any three out of four) **(4 Marks x 3=12)**
- a) Primary prevention in cancers
 - b) Measures of central tendency
 - c) Role of medical officer during disaster period
 - d) Types of epidemics

Department of Community Medicine & Family Medicine
All India Institute of Medical Sciences Bhubaneswar
End semester theory Examination, 6th semester - 2015 Batch

Duration: 3 hours

Date: 30-05-18 (2 - 5 pm)

Total marks: 75

Attempt all the questions.

Answer each question in a different sheet.

Answer all questions of a section together.

Section A

1. Mention about most common cancers in men & women. Discuss the risk factors, prevention and control strategy for cervical cancer.
(2+3+4+4 = 12)

2. Write short notes on

(5 x 5 = 25)

- (a) Tracking of blood pressure: importance and its application for control of hypertension
(b) Prevention of Road traffic accident
(c) Primary prevention of Type II Diabetes mellitus
(d) Epidemiology of obesity
(e) Causes of childhood blindness and mention strategies under RBSK programme (2+3)

Section B

3. Mention various steps of planning cycle with proper illustration. Describe network analysis.

(6+7 = 13)

4. Write short notes on

(5x 5 = 25)

- (a) SAFE strategy for prevention of corneal blindness
(b) Classification of animal bite cases and management of Category 3 bite in brief (3+2)
(c) Prevention of parent to child transmission, rationale and strategy under NACP
(d) Management of diarrhea in 2 years old child without dehydration
(e) Integrated vector control strategy for Japanese Encephalitis

Department of Community Medicine and Family Medicine
All India Institute of Medical Sciences, Bhubaneswar
Final Pre-Professional Practical Examination

Short Case

Marks: 20

Time: 20 min

Assess the treatment and disease control status of this patient and do the risk factor assessment of the patient. Advise the patient regarding the prevention of complications and reduction of risk factors?

**DEPARTMENT OF COMMUNITY MEDICINE AND FAMILY MEDICINE
FINAL PRE-PROFESSIONAL EXAMINATION
EPIDEMIOLOGICAL AND BIostatISTICS EXERCISES**

Maximum Marks = 30

Duration = 40 minutes

1. A study was done to evaluate the performance of new diagnostic test for diabetes. Among the 80 study participants found positive by the new test, it was found that 40 actually had diabetes. Among 9920 participants found negative by the new test, it was found that 9840 actually didn't have diabetes. **(Marks = 10)**
- a) Prepare 2*2 table to depict the results of the above study
- b) Calculate sensitivity, specificity and comment on the usefulness of this test as a screening test for diabetes.
2. In a city with a population of 60, 000; six thousand (6000) deaths occurred during the year 2011. These included 3000 deaths from cholera among 40,000 people who were sick with cholera. **(Marks = 5)** Calculate: a. The cause specific mortality rate for cholera in year 2011
b. Case fatality rate for cholera in year 2011
3. Attack rate among the vaccinated and unvaccinated against measles are given below. Suggest if vaccination is protective against measles infection using appropriate statistical tests. **(Marks = 10)**

Group	Results		Total
	Attacked	Not attacked	
Vaccinated	10	90	100
Unvaccinated	26	74	100
Total	36	164	200

4. 1950 blood slides were collected by health worker in the field, in a primary health center with a population of 38,500. Another 750 slides were collected at the PHC for Malaria. Of the total slides Collected, 180 slides were positive for malaria parasites. **(Marks = 5)**
- Calculate:
- a. Annual Parasite Incidence
- b. Annual Blood Examination Rate
- c. Slide Positivity Rate

DEPARTMENT OF COMMUNITY MEDICINE AND FAMILY MEDICINE

FINAL PROFESSIONAL EXAMINATION-Batch 2014

Epidemiological and biostatistics exercises-Set 3

December 2018

Maximum Marks = 30

Duration = 40 minutes

1. The following data has been observed in India for TB patients under RNTCP. (Marks=10)

Total registered cases under RNTCP: 120000

Cured: 96000

Treatment complete: 4000

Patients died during treatment: 5400

Failure of treatment: 3600

No. of defaulters: 11000

Calculate

a) Cure rate ✓

b) Death rate ✓

c) Failure rate ✓

d) Defaulter rate ✓

e) Success rate

$$\frac{96000}{120000}$$

$$\frac{96000}{120000}$$

2. The case control study was conducted to study the association between smoking and lung cancer. Of the 260 cases of lung cancer 75 were smoker whereas out of the 300 controls 45 were smokers. (Marks = 5)

a) Construct a 2x2 table

b) Calculate the Odds ratio

c) Interpret your findings in terms of strength of association and its statistical significance

PTO



All India Institute of Medical Sciences, Bhubaneswar

3rd Professional MBBS Final Examination 2016

Time: 3 Hrs

Community Medicine (Paper-I)

Max. Marks: 75

Instructions

Answer all the questions. Draw diagram wherever necessary. Use separate answer sheets for Section-A & B.

Section - A

Q1. Enlist method of nutritional assessment in community. How will you assess nutritional status in a primary school? Describe in detail. (5+8=13)

Q2. Write short notes: (5x5=25)

- Systematic random sampling
- Principles of health education
- Isolation vs. Quarantine
- Fertility indicators
- Role of NGOs in care of elderly

Section - B

Q3. A pregnant woman in her second trimester presents with a haemoglobin level of 8.5 gm/dl. How is anaemia in pregnancy graded according to WHO classification and what is her grade of anemia? What are the measures to prevent and control nutritional anaemia in India? (4+8=12)

Q4. Write short notes: (5x5=25)

- Byssinosis
- Principles of Primary Health care
- Sustainable Development Goals for improving health and nutrition
- Arsenic contamination of water
- Causes and health effects of air pollution in urban India

***** The End *****



All India Institute of Medical Sciences, Bhubaneswar
3rd Professional MBBS Final Examination 2016

Time: 3 Hrs

Community Medicine (Paper-II)

Max. Marks: 75

Instructions

Answer all the questions. Draw diagram wherever necessary. Use separate answer sheets for Section-A & B.

Section - A

Q1. Describe the salient features of epidemiology of Japanese Encephalities in India. What steps will you take to control the epidemic of JE? What is the JE vaccination strategy of Ministry of Health & Family Welfare, GOI. (4+5+4=13)

(5x5=25)

Q2. Write short notes:

- Diagnosis and Treatment of Multibacillary Leprosy
- Syndromic management in sexually transmitted diseases (STD) control
- Integrated Vector Management
- Screening for Diabetes Mellitus
- Modifiable risk factors in hypertension

Section - B

Q3. Define Perinatal Mortality Rate. What are the causes of high PMR in India? How do you assess and classify the sick young infant of age upto two months under IMNCI. (3+4+5=12)

(5x5=25)

Q4. Write short notes:

- Warning signals of poor mental health
- Preventable Blindness
- Diagnosis and management of Trachoma
- Hazards of Bio-medical waste
- Adverse events following immunization

***** The End *****

Time: 9:30-11:30

COMMUNITY MEDICINE

Max marks: 50

1. You have been asked to find the prevalence of anaemia in the village adopted by your batch and also collect data for planning anaemia control programme in the same village.
 - a. Which epidemiological study design will you use? [2]
 - b. Describe the steps needed to carry out the study. [5]
 - c. List the advantages and disadvantages of this type of study design. [3]

2. List important zoonotic diseases in India. Classify dog bite and discuss in brief the management of category III dog bite. [3+3+4]

3. Write short notes on: [6x5=30]
 - a. Measures of dispersion
 - b. Prevention of RF/RHD
 - c. Job responsibilities of Health Worker Female
 - d. Management of dehydration in an infant weighing 8 kg
 - e. Services in the district hospital under District Mental Health Programme
 - f. Counselling Skills

DEPARTMENT OF COMMUNITY MEDICINE & FAMILY MEDICINE
ALL INDIA INSTITUTE OF MEDICAL SCIENCES
BHUBANESWAR

6th End-Semester Exam- 2012 Batch

Time: 9:30-11:30

Date: 11.06.2015

Max marks: 50

Write short notes on:

[10x5=50]

1. Define perinatal mortality and list the causes of high PMR in India.
2. Enumerate the occupational hazards faced by a farmer.
3. Differences between a case control and cohort study.
4. Validity of a screening test.
5. Control of an outbreak of measles.
6. Treatment of malaria in Odisha.
7. Cancer registration?
8. Define primary health care and write in brief about principles of primary health care.
9. Planning cycle & monitoring.
10. Activities of daily living?

SDC

NPC

DEPARTMENT OF COMMUNITY MEDICINE & FAMILY MEDICINE
ALL INDIA INSTITUTE OF MEDICAL SCIENCES
BHUBANESWAR

End Semester Exam- 2014 Batch (6th)

Time: 10:00-12:00 Hrs (Including 15 min) Date: 30.05.2017

Max marks: 40

Write short notes on:

[10x4=40]

- X1. Integrated Vector Management
- X2. Diagnosis & treatment of malaria in an area where microscopy is available within 24 hours
- X3. Revised classification and treatment of pneumonia in 2-59 months old children
- X4. Management by objectives
- X5. Health care delivery system in India
- X6. Treatment categories under DOTS chemotherapy for tuberculosis
- X7. Type I & Type II Lepra Reactions
- X8. Syndromic management of vaginal discharge
- X9. National Deworming Day
- X10. Services available at the level of Subcentre, PHC, CHC and district under the National Programme for prevention and control of cancer, diabetes, CVD and stroke.

DEPARTMENT OF COMMUNITY MEDICINE & FAMILY MEDICINE
ALL INDIA INSTITUTE OF MEDICAL SCIENCES
BHUBANESWAR

End-semester **7th** Examination- Dec 2017
Batch 2014

Date: 19.12.17

Time: 2:30-3:30 PM

1. Describe the framework of a case control study. Elaborate the steps in conducting a case control study. What are the types of biases in case control study? [1+6+3=10]
- 2.
3. Write short notes on: [5x4=20]
 - a. Types of sampling techniques
 - b. Determinants of fertility
 - c. Human Development Index
 - d. Mission Indradhanush
4. What is maternal mortality ratio? What are the factors that contribute to MMR? Describe measures being taken to reduce MMR in India. [1+3+6=10]
5. Write short notes on [5x4=20]
 - a. Lead poisoning as an occupational hazards
 - b. Sanitation barrier
 - c. Registration of vital event
 - d. Principles of health education

Pravara

Department of Community Medicine and Family Medicine

All India Institute of Medical Sciences, Bhubaneswar

Final Pre-Professional Practical Examination

LONG CASE

Marks: 40

Time: 45 min

**Study the clinico-psycho-social aspect of
the family in context of an ante-natal case**

DEPARTMENT OF COMMUNITY MEDICINE & FAMILY MEDICINE
ALL INDIA INSTITUTE OF MEDICAL SCIENCES
BHUBANESWAR

3rd Pre-professional MBBS Examination-2018

Community Medicine

Paper – II

1. What are the cut-offs for normal respiratory rate in under-five children? Under IMNCI, how do you assess and classify a child with cough? What are the danger signs in children? [3+7+3=13]
2. Write short notes on: [5x5=25]
- a. Cotrimoxazole prophylaxis in HIV+ adults
 - b. Tracking of blood pressure
 - c. Cancer prevention
 - d. Principles of Revised National Tuberculosis Control Programme
 - e. Indicators for vector surveillance
3. Define maternal mortality. What are the causes of maternal mortality? What are the measures that can be taken to reduce maternal mortality? [2+4+6=12]
4. Write short notes on [5x5=25]
- a. Elements of comprehensive abortion care
 - b. Baby friendly hospital initiative
 - c. Red flags for ophthalmic referral at primary care level
 - d. Psychiatric problems among adolescents
 - e. Types of waste to be placed in yellow bag according to BMW management rule 2016.
-

ALL INDIA INSTITUTE OF MEDICAL SCIENCES
BHUBANESWAR
Pre-professional Exam- 2012 Batch

Community & Family Medicine-Paper II

Time: 10:00-13:00

Date: 15.10.2016

Max marks: 75

Attempt all the questions.

Answer each section in a different sheet.

Answer all questions of a section together.

Section A

1. Describe the epidemiological factors involved in the occurrence of malaria, its surveillance and treatment of malaria. [5+4+6]
2. How are the states and districts categorized according to HIV prevalence? What are the components of National AIDS Control Programme IV? What are the first line ART regimens followed under NACP? [4+6+5]

Section B

3. What is the maternal mortality ratio? What are the factors that affect MMR? What are the measures that are being implemented to control MMR in India? [2+4+4]
4. Write short notes on: [5x7]
 - a. Essential newborn care.
 - b. Risk factors for cardiovascular diseases.
 - c. Cancer registration.
 - d. Growth monitoring.
 - e. Objectives of National Mental Health Policy of India.
 - f. Vision 2020.
 - g. Packages of services to be provided at CHC/FRU level.

100%
institutional
capacities
comprehensive
case/H
supp
Prevent
near
100
cap/E

ALL INDIA INSTITUTE OF MEDICAL SCIENCES
BHUBANESWAR
Pre-professional Exam- 2012 Batch

Community & Family Medicine-Paper I

Time: 10:00-13:00

Date: 13.10.2016

Max marks: 75

Attempt all the questions.

Answer each section in a different sheet.

Answer all questions of a section together.

Section A

1. What should be the characteristics of a health indicator? Enumerate the various health indicators. Write in detail about the disability indicators. [3+3+4]
2. Which is the most appropriate study design to find risk factors for a rare disease? Describe the steps in conducting such a study. What could be the biases involved in such a study? [2+4+4]

Section B

3. What are the levels of health care? What are the objectives of Indian Public Health Standards (IPHS) for Primary Health Centres (PHC)? What are the services provided at a PHC? [3+3+4]
4. Write short notes on: [5x9]
 - a. Sustainable Development Goals
 - b. Iodine deficiency disorders
 - c. Demographic cycle
 - d. Sampling techniques
 - e. Breakpoint chlorination
 - f. Classification of biomedical waste
 - g. Responsibilities of World Health Organization
 - h. Differences between family medicine and other specialities
 - i. Genetic counselling

NPCDES

S-
m-eds-
S-

Initial
Solved
Lig-
Intern-
Exam



All India Institute of Medical Sciences, Bhubaneswar
3rd Professional MBBS Final Examination 2018

Time: 3 Hours

Community Medicine (Paper - I)

Max. Marks: 75

Instructions

Answer all the questions. Draw diagram wherever necessary. Use separate answer sheets for Section A and B.

Section - A

1. Classify the different types of epidemiological studies and describe in detail the design of a Randomised Control Trial and its ~~advantages~~. (9+4 = 13)
2. Write short notes on: (5 x 5 = 25)
 - a) Bias in case-control studies
 - ~~b) Instrumental Activities of Daily Living~~
 - c) Barriers of communication
 - d) Human Development Index
 - e) Measures of dispersion

Section - B

3. What is a balanced diet? Which are the common nutritional disorders prevalent in India? What are the measures being taken to bring down such disorders? (2+5+5 = 12)
4. Write short notes on: (5 x 5 = 25)
 - a) Principles of chlorination.
 - b) Occupational hazards faced by a doctor in India
 - c) Methods of Excreta disposal
 - d) Network Analysis
 - e) Ideal IUCD candidate

DEPARTMENT OF COMMUNITY MEDICINE & FAMILY MEDICINE
ALL INDIA INSTITUTE OF MEDICAL SCIENCES
BHUBANESWAR

3rd Pre-professional MBBS Examination-2018

Community Medicine

Paper - I

1. Which study design will you use to compare efficacy of two drugs? Elaborate the steps in conducting such a study. How do you ensure that bias from participants & investigators is not introduced in such a study? [1+8+4=13]

 2. Write short notes on: [5x5=25]
 - a. Types of variables with examples
 - b. Fertility indices
 - c. Qualities of a good health indicator
 - d. Barriers of communication
 - e. Battered baby syndrome

 3. What are the objectives of Indian Public Health Standards for Primary Health centres? What are the minimum requirements in a PHC according to IPHS? Mention the internal and external mechanisms for monitoring of PHCs. [2+8+2=12]

 4. Write short notes on: [5x5=25]
 - a. Occupational hazards faced by a sulabh worker in AIIMS hospital
 - b. Triage commonly used during disaster
 - c. Purification of water at household level
 - d. Network Analysis
 - e. Works of WHO
-

Section - B

- 3) What are the agencies providing health care in India? Describe the Indian Public Health Standards for an ideal community health centre. (5+7 = 12)
- 4) **Write short notes on:** (5 x 5 = 25)
- a) Services provided in Nutritional Rehabilitation Centre.
 - b) Occupational cancers
 - c) Methods of solid waste disposal,
 - d) Ayushman Bharat
 - e) Water borne diseases

ALL INDIA INSTITUTE OF MEDICAL SCIENCES
BHUBANESWAR
Pre-professional Exam- 2013 Batch

BMK

neeal

Community & Family Medicine-Paper II

Time: 09:00-12:00

Date: 08.10.2017

Max marks: 75

Attempt all the questions.
Answer each section in a different sheet
Answer all questions of a section together.

6

Section A

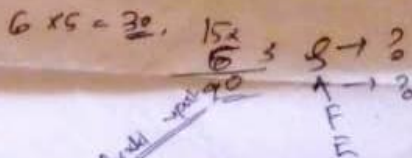
1. What is a presumptive case of pulmonary tuberculosis? Draw the diagnostic algorithm for pulmonary TB. What are the goals of TB treatment? What is the treatment for drug sensitive TB? 2

[1+3+3+6=13]

2. Write short notes on:

[5x5=25]

- a. Mass drug administration
- b. SAFE strategy for control of trachoma
- c. Cancer registration
- d. Prevention of rheumatic heart disease
- e. Prevention & control of infectious hepatitis



Section B

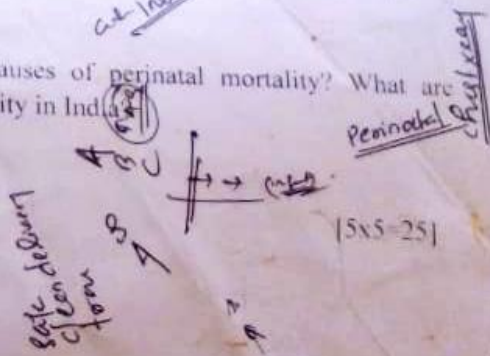
3. What is perinatal mortality? What are the causes of perinatal mortality? What are strategies to prevent and control perinatal mortality in India? 2

[2+4+6=12]

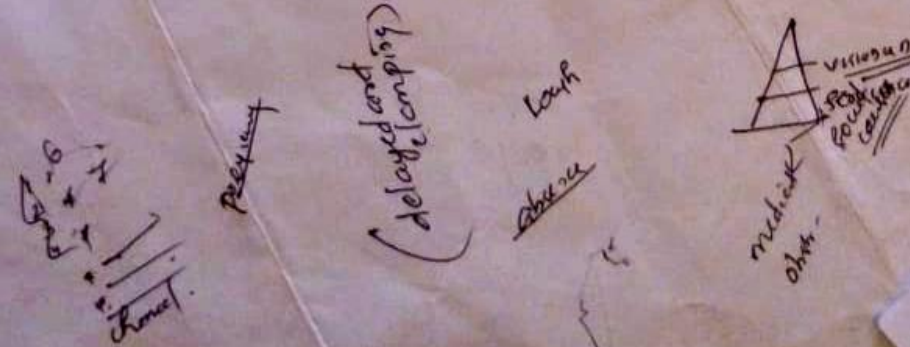
Write short notes on:

- a. Newborn Care
- b. Periodic health review
- c. Prevention of drug dependence debs
- d. Goals & Objectives of National Programme for Control of Blindness in the XII Plan
- e. Kind of wastes to be placed in a yellow coloured bin, according to BMW Rules, 2016

[5x5=25]



8-





All India Institute of Medical Sciences, Bhubaneswar
3rd Professional MBBS Final Examination 2018

Time: 3 Hrs Community Medicine (Paper-II) Max. Marks: 75

Instructions

Answer all the questions. Draw diagram wherever necessary. Use separate answer sheets for Section-A & B.

Section - A

1. Describe about the malaria control activities under the National Vector Borne Disease Control Program. Write about the treatment and prophylaxis of malaria under National Drug Policy on malaria 2013. (9+4 = 13)

2. Write short notes on – (5 x 5=25)
 - a) Preventive health care of the elderly
 - b) Comprehensive eye-health care
 - c) Cancer Registration
 - d) Direct Observed Treatment Short-course (DOTS)
 - e) Oral Rehydration Therapy

Section – B

3. Define Infant Mortality Rate. Enumerate important causes of infant mortality in India. Discuss various measures undertaken in the RCH programme to reduce it. (2+4+6=12)

4. Write short notes on – (5 x 5 =25)
 - a) Mother and child tracking System
 - b) MDA for filariasis
 - c) Post-exposure prophylaxis of Rabies for previously vaccinated persons
 - d) Integrated Counselling and Testing Centres
 - e) Services provided under ICDS



All India Institute of Medical Sciences, Bhubaneswar
3rd Professional MBBS Final Examination 2017

Time: 3 Hrs

Community Medicine (Paper-II)

Max. Marks: 75

Instructions

Answer all the questions. Draw diagram wherever necessary. Use separate answer sheets for Section-A & B.

Section - A

- Q1. Describe the epidemiology of common cancers in India. Discuss the activities under national programme for prevention and control of cancer, diabetes, cardiovascular diseases and stroke at different levels of care (4+9 = 13).
- Q2. Write short notes on – (5 x 5=25)
- ✓ Vision 2020: The Right to Sight
 - ✓ Present Polio vaccination strategy in India
 - ✓ Plan to reduce neonatal mortality in India
 - ✓ Epidemiology of dengue
 - ✓ Role of Zinc in management of diarrhoea.

Section - B

- Q3. Define maternal mortality. Describe the reasons for high maternal mortality in India and prevention of anaemia during pregnancy. (2 + 5 + 5 =12)
- Q4. Write short notes on – (5 x 5 =25)
- ✓ Measures to improve the health status of the elderly
 - ✓ Integrated vector management
 - ✓ Common mental health conditions in primary care setting and its diagnosis
 - ✓ Segregation of waste according to Biomedical waste management Act, 2016
 - ✓ Role of Anganwadi worker in ICDS.

ALL INDIA INSTITUTE OF MEDICAL SCIENCES
BHUBANESWAR
Pre-professional Exam- 2013 Batch

Community & Family Medicine-Paper II

Time: 09:00-12:00

Date: 08.10.2017

Max marks: 75

Attempt all the questions.

Answer each section in a different sheet.

Answer all questions of a section together.

Section A

✓ What is a presumptive case of pulmonary tuberculosis? Draw the diagnostic algorithm for pulmonary TB. What are the goals of TB treatment? What is the treatment for drug sensitive TB? [1+3+3+6=13]

✓ Write short notes on: [5x5=25]

- ✓ a. Mass drug administration
- ✓ b. SAFE strategy for control of trachoma
- ✓ c. Cancer registration
- ✓ d. Prevention of rheumatic heart disease
- ✓ e. Prevention & control of infectious hepatitis

Section B

✓ What is perinatal mortality? What are the causes of perinatal mortality? What are strategies to prevent and control perinatal mortality in India? [2+4+6=12]

→ 22nd - 42nd day post delivery

✓ Write short notes on: [5x5=25]

- ✓ a. Newborn Care
- ✓ b. Periodic health review
- ✓ c. Prevention of drug dependence
- ✓ d. Goals & Objectives of National Programme for Control of Blindness in the XII Plan
- ✓ e. Kind of wastes to be placed in a yellow coloured bin, according to BMW Rules, 2016